

Product Cut Sheet: Chain Operated Platinum Series Clutch Mechanism

The heavy-duty chain operated clutch mechanism allows one to position the roller shade with precise accuracy. The bi-directional clutch never needs adjustment. When the operator stops pulling on the bead chain, the clutch stops automatically, holding the shade in the exact position desired. The Platinum Series Contract clutch mechanism is manufactured from PA6 with glass fiber.

Features:

- 1/8" Thick Steel Bracket
- Clutch Fixed to Installation Bracket
- Fascia Valance does not require a notch for the chain to drop through
- #10 Qualified Stainless Steel Bead Chain may be offset
- Idler End Bracket has a height leveling adjustment
- Idler End Bracket has a ball bearing idler for quiet and ultra smooth rotation
- Idler End Cap is spring loaded and retractable for simple and easy installation

Platinum Series Contract Clutch

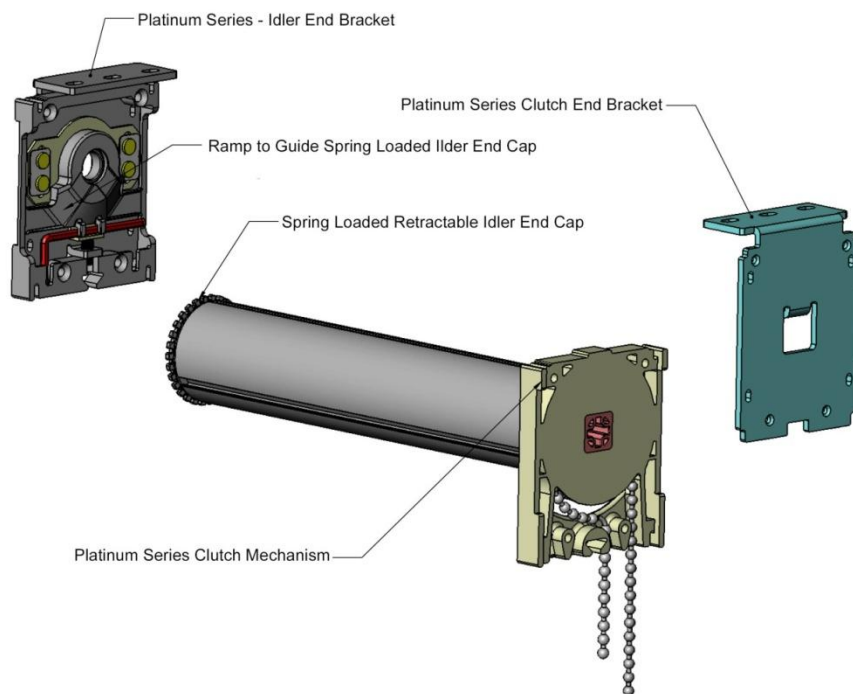


Diagram of Clutch Bracket

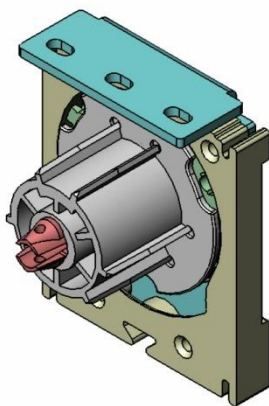


Diagram of Idler Bracket

